



HƯỚNG DẪN SỬ DỤNG **G P R S MODEM**
TRUY CẬP INTERNET



GSM Antenna

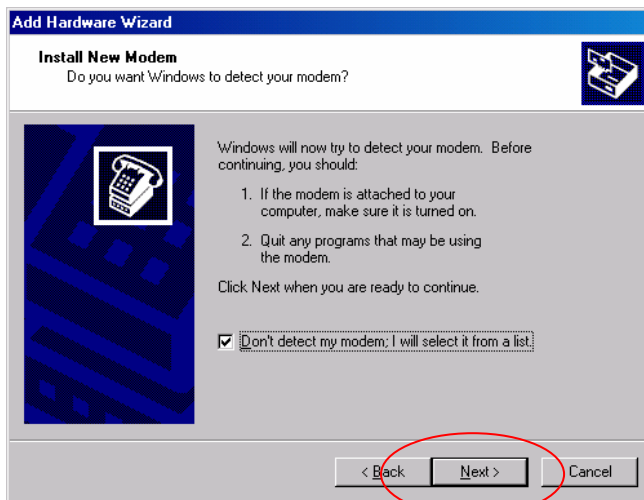
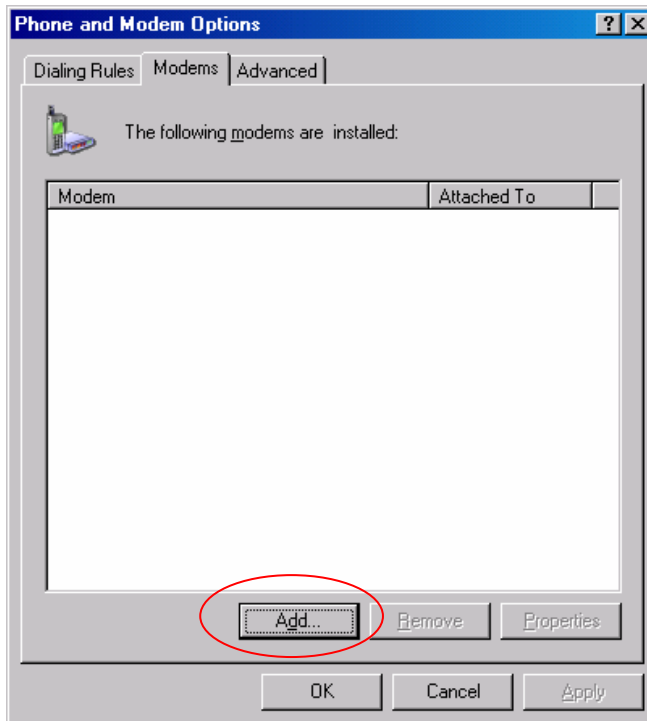
04/2008



1. Set lại tốc độ của modem:

- Gắn modem vào máy tính
- Khởi động Hyperterminal
- Set lại tốc độ từ 9,600 (Tốc độ mặc định) chuyển qua 115,200 bằng lệnh:
AT+IPR = 115200

2. Cài modem:



Add Hardware Wizard
Install New Modem

Select the manufacturer and model of your modem. If your modem is not listed, or if you have an installation disk, click Have Disk.

Manufacturer	Models
(Standard Modem Types)	Standard 19200 bps Modem
	Standard 28800 bps Modem
	Standard 33600 bps Modem
	Standard 56000 bps Modem

This driver is digitally signed.
[Tell me why driver signing is important](#)

Have Disk...

< Back Next > Cancel

Add Hardware Wizard
Install New Modem

Select the port(s) you want to install the modem on.

You have selected the following modem:
Standard 56000 bps Modem

On which ports do you want to install it?

All ports
 Selected ports

COM1

< Back Next > Cancel

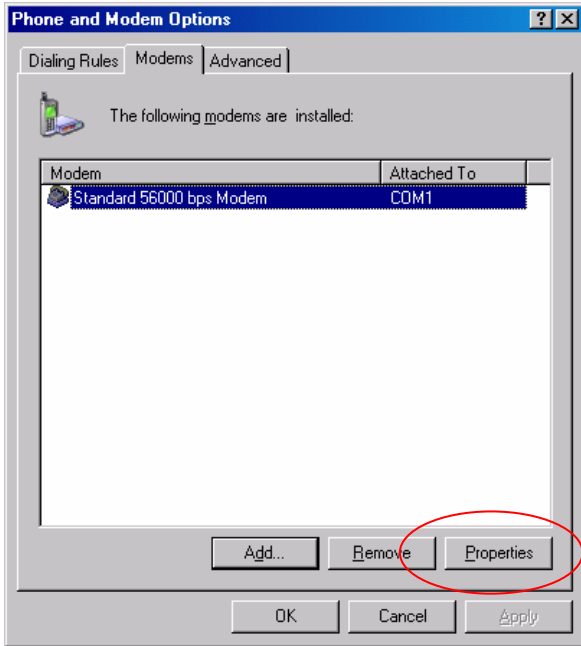
Add Hardware Wizard
Install New Modem

Modem installation is finished!

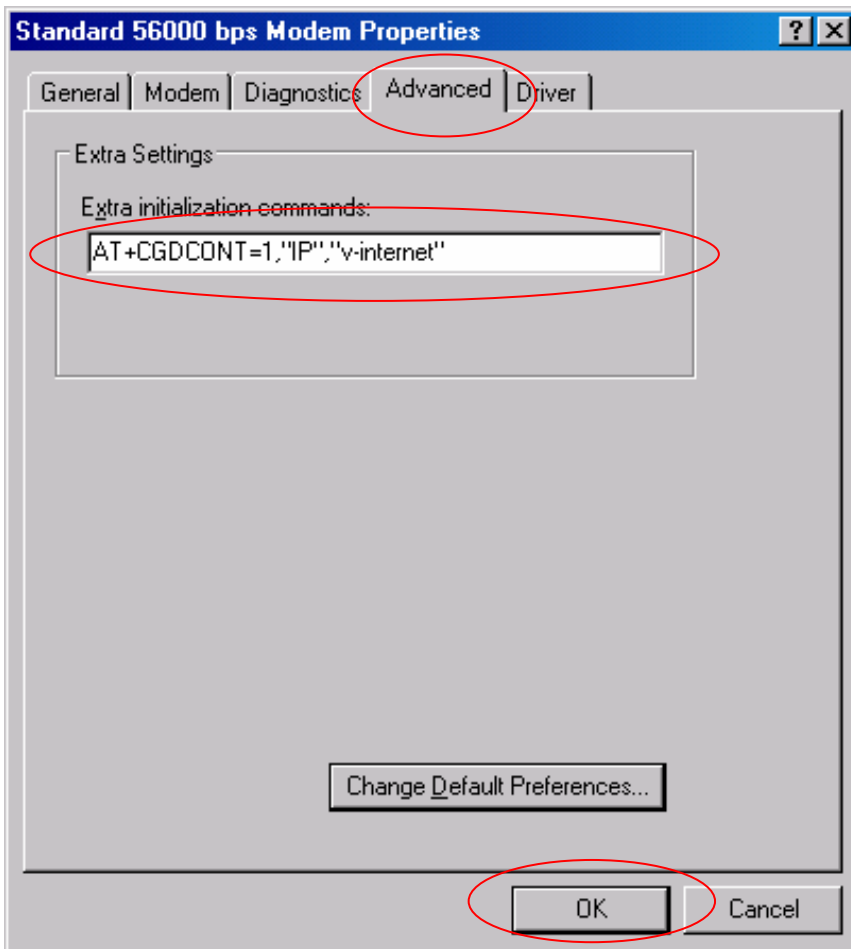
Your modem has been set up successfully.

If you want to change these settings, double-click the Phone and Modem Options icon in Control Panel, click the Modems tab, select this modem, and then click Properties.

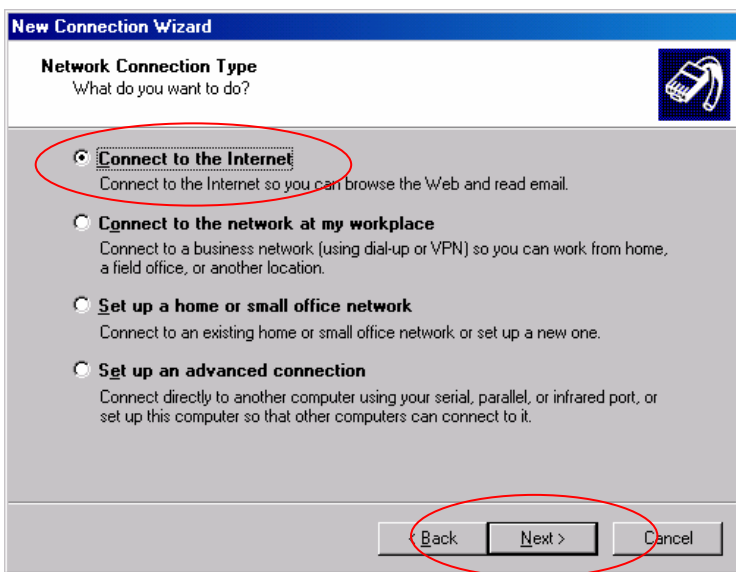
< Back Finish Cancel



Nếu SIM là Viettel bạn gõ AT+CGDCOUNT = 1,"IP","v-internet"



3. Tạo kết nối mới:



New Connection Wizard

Getting Ready
The wizard is preparing to set up your Internet connection.

How do you want to connect to the Internet?

- Choose from a list of Internet service providers (ISPs)
- Set up my connection manually**
For a dial-up connection, you will need your account name, password, and a phone number. For a broadband account, you won't need a phone number.
- Use the CD I got from an ISP

< Back Next > Cancel

New Connection Wizard

Internet Connection
How do you want to connect to the Internet?

- Connect using a dial-up modem**
This type of connection uses a modem and a regular or ISDN phone line.
- Connect using a broadband connection that requires a user name and password
This is a high-speed connection using either a DSL or cable modem. Your ISP may refer to this type of connection as PPPoE.
- Connect using a broadband connection that is always on
This is a high-speed connection using either a cable modem, DSL or LAN connection. It is always active, and doesn't require you to sign in.

< Back Next > Cancel

New Connection Wizard

Connection Name
What is the name of the service that provides your Internet connection?

Type the name of your ISP in the following box.

ISP Name
Viettel_GPRS

The name you type here will be the name of the connection you are creating.

< Back Next > Cancel

New Connection Wizard

Phone Number to Dial
What is your ISP's phone number?

Type the phone number below.

Phone number:
*99***1#

You might need to include a "1" or the area code, or both. If you are not sure you need the extra numbers, dial the phone number on your telephone. If you hear a modem sound, the number dialed is correct.

< Back Next > Cancel

New Connection Wizard

Internet Account Information
You will need an account name and password to sign in to your Internet account.

Type an ISP account name and password, then write down this information and store it in a safe place. (If you have forgotten an existing account name or password, contact your ISP.)

User name: _____

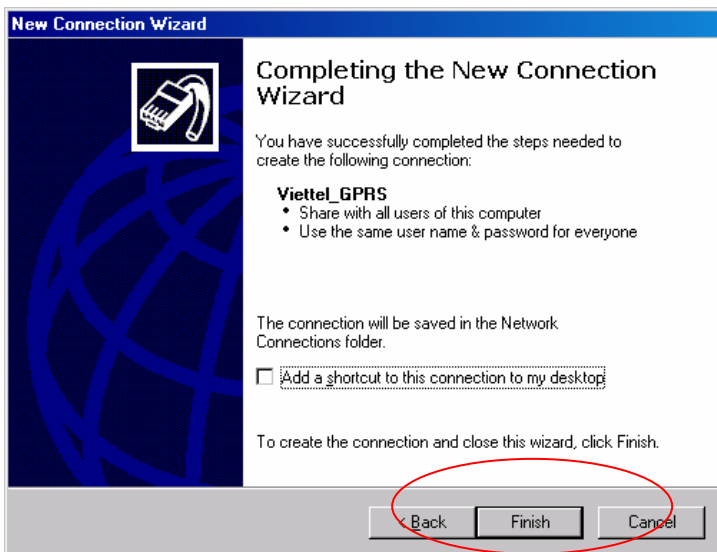
Password: _____

Confirm password: _____

Use this account name and password when anyone connects to the Internet from this computer

Make this the default Internet connection

< Back Next > Cancel



4. Quay số kết nối:



Thực hiện bởi:

Bộ phận Hỗ trợ Kỹ thuật

Công ty TNHH A.D.A (Asian Dragon Co., Ltd.)

53B3 Cộng Hòa, F.13, Tân Bình, TP.HCM

Chi nhánh liên doanh:

Đường số 2, Khu Công Nghiệp Biên Hòa I, Đồng Nai

Tel: + 84-8-8.108.289/9.733.967 Fax: +84-8-8.108.290

Web: <http://www.adasolution.net> Email: asiandragon@adasolution.net